



26<sup>th</sup> January 2024

Dear parents and carers,

Welcome to this week's newsletter

## Multiply

Yesterday was the first session of our parent Multiply course and the parents who attended were brilliant and loved learning about Primary Maths. They enjoyed getting to try it out on their children. You might have seen this over parentmail or on Facebook. There are 2 further sessions planned and it's not too late to sign up! Just pop into the office or give them a call. All parents who attend the sessions will receive a book gift, some resources to use at home with their child and a £15 food voucher.

**SYMCA**  
SOUTH YORKSHIRE  
METROPOLITAN  
COMBINED  
AUTHORITY

**Multiply**

Want to support your child at home with maths but unsure how?  
Unsure about the methods we use in school?  
Want ideas and resources to engage your child at home in maths?  
**THIS IS FOR YOU!**

**MATHS COURSE FOR  
PARENTS AND CARERS**

THURSDAY 25TH JANUARY  
THURSDAY 1ST FEBRUARY  
THURSDAY 8TH JANUARY

9 AM - 12

COMPLETE THE COURSE AND RECIEVE A FREE BOOK,  
MATHS RESOURCES TO USE AT HOME WITH YOUR  
CHILD AND A £15 FOOD VOUCHER.

LIMITED PLACES SO DON'T MISS OUT  
CONTACT THE SCHOOL OFFICE TO BOOK A PLACE  
01302 874536



A Member of

**Exceed Learning Partnership**  
• EVERY CHILD • EVERY CHANCE • EVERY DAY •

Exceed Learning Partnership is an exempt charity regulated by the Secretary of State for Education. It is a company limited by guarantee, registered in England and Wales (Company Number 10660150) whose registered office is Edlington Lane, Edlington, Doncaster DN12 1PL

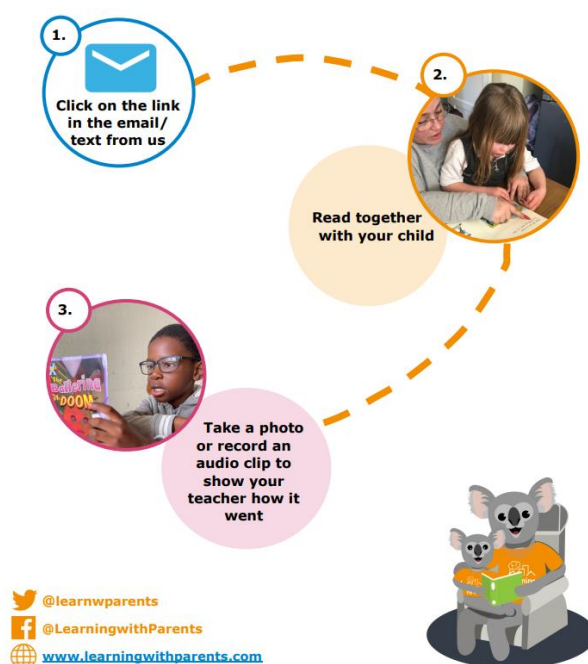


## World Book Day

Forward notice that Thursday 7<sup>th</sup> March is World Book Day. Children will be able to come into school dressed as their favourite character from a book. More details will be coming out soon!

## Reading

As you know, we constantly speak to our children about how important reading is. When children are able to read well, they find learning so much easier across other curriculum areas. We really want to work in partnership with you to ensure children are reading. We monitor reading using **We Read**. Children who read three times a week are rewarded in school. Children can read anything at home as long as they are reading! Many children tell us they read at home but it doesn't get logged. Please let us know if you need help with this. Attached to this email is a letter with reminders.



## EYFS plea again!

Our early years is always on the lookout for the below items if you have any at home you don't need any more:



A Member of

**Exceed Learning Partnership**

• EVERY CHILD • EVERY CHANCE • EVERY DAY •

Exceed Learning Partnership is an exempt charity regulated by the Secretary of State for Education. It is a company limited by guarantee, registered in England and Wales (Company Number 10660150) whose registered office is Edlington Lane, Edlington, Doncaster DN12 1PL.



- Mobile or landline phones
- Books
- Fancy dress costumes ages between 2-6
- Scarves

Also, if you ever have any flowers at home, once they start to wilt, we will happily take them for our mud kitchen! So please just pass to a member of No.1, nursery or reception.

### Parking reminders

We have communicated with you many times about our concern about parking around school. We do not think that any children should be walking down the road next to school due to the amount of cars and the lack of pedestrian walkway. Please can we remind parents that the road is an access route to many businesses. This means that the road cannot be blocked. Some cars are being parked and left next to the hedges adjacent to the church. This is making it impossible for cars to pass safely and it is causing increased congestion and danger to pupils as it creates blind spots. No cars should be parked here, blocking the road or the staff carpark. We are continuing to be supported by Ed Miliband and we are in discussion with the council in creating a barrier. We think this is essential in order to keep access safe. We would really appreciate parent support with this.

### Measles

There have been recent localised outbreaks of measles centred around the West Midlands. There is a risk of further outbreaks in other areas unless urgent action is taken to increase Measles, Mumps and Rubella (MMR) vaccination take up in areas with low MMR vaccine rates.

Measles spreads very easily among those who are unvaccinated, especially in nurseries and schools. The best protection against measles for children and adults is to get both doses of the MMR vaccine. It is never too late to have these vaccinations.

The following UKHSA guidance is available on GOV.UK:

- Health protection in children and young people settings, including education - GOV.UK ([www.gov.uk](http://www.gov.uk))
- Managing outbreaks and incidents - GOV.UK ([www.gov.uk](http://www.gov.uk)).

The NHS also has the following advice for parents on measles:

- Measles - NHS ([www.nhs.uk](http://www.nhs.uk))

DfE has published an Education Hub blog with guidance on measles and the MMR vaccine for parents, nurseries and schools



A Member of

**Exceed Learning Partnership**  
• EVERY CHILD • EVERY CHANCE • EVERY DAY •

Exceed Learning Partnership is an exempt charity regulated by the Secretary of State for Education. It is a company limited by guarantee, registered in England and Wales (Company Number 10660150) whose registered office is Edlington Lane, Edlington, Doncaster DN12 1PL.



## Attendance

Many children have been poorly this week with flu like symptoms. However despite our attendance being lower this week, we are still doing well in comparison to national figures. Thank you for your support with this.

WK -2= 8 <sup>th</sup> Jan -12 <sup>th</sup> January 2024	National this week	National from Sept	BHSP this week 18 <sup>th</sup> -24 <sup>th</sup> Jan	BHSP from Sept To 19 <sup>th</sup> Jan
Overall absence rate	6.6%	6.8%	9.4%	6.3%
Authorised absence	4.1%	4.5%	8.3%	4.6%
Unauthorised absence	2.5%	2.2%	1.1%	1.7%
Overall attendance	93.4%	93.2%	90.6%	93.7%
Persistently absent	N/A	20.3%	24.2%	21%

As always, please can you continue to notify us of any absence. We do visit homes if we have not heard from families.

## Safeguarding

FYI ... it's MyLOL 

A "dating app for teens" poses evident #OnlineSafety risks – especially when its age verification is far from robust. This week's #WakeUpWednesday guide tells parents and carers what they need to know. Any questions please ask Mrs Davey or Miss Brogan

Best wishes,



Miss Austwick  
Principal

## Diary Dates

Attached are diary dates for the term. Obviously there may be circumstances where these have to change but we will do our best to give you plenty of notice.

26.01	
-------	--



A Member of

**Exceed Learning Partnership**  
• EVERY CHILD • EVERY CHANCE • EVERY DAY •

Exceed Learning Partnership is an exempt charity regulated by the Secretary of State for Education. It is a company limited by guarantee, registered in England and Wales (Company Number 10660150) whose registered office is Edlington Lane, Edlington, Doncaster DN12 1PL



**Bentley High Street Primary School**

High Street, Bentley  
Doncaster DN5 0AA

**T** 01302 874536

**E** [admin@bentleyhighst.doncaster.sch.uk](mailto:admin@bentleyhighst.doncaster.sch.uk)

[www.bentleyhighstreet.co.uk](http://www.bentleyhighstreet.co.uk)

29.01	
30.01	Y3/4 Boccia tournament
31.01	
01.02	9.00-11 KP Multiply project 2K class assembly 10am Y4 Castleton Parent Meeting
02.02	3.30- Year 2 SATs parent meeting
05.02	
06.02	Y1 Church visit 1pm Safer internet day
07.02	Y6 church visit 1pm
08.02	
09.02	



A Member of  
**Exceed Learning Partnership**  
• EVERY CHILD • EVERY CHANCE • EVERY DAY •

Exceed Learning Partnership is an exempt charity regulated by the Secretary of State for Education. It is a company limited by guarantee, registered in England and Wales (Company Number 10660150) whose registered office is Edlington Lane, Edlington, Doncaster DN12 1PL